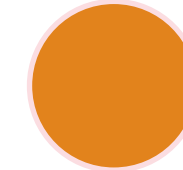


KEY TRENDS_*Colour 1*

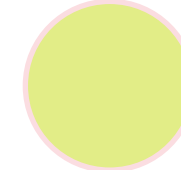
When it comes to colour, consumers of all ages are gaining confidence.
It's the perfect time to build vibrant colour into your collection.

This summer, infuse your range with a dose of fun.

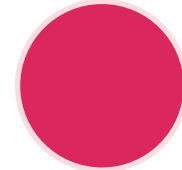
LET THE COLOURS DO THE TALKING



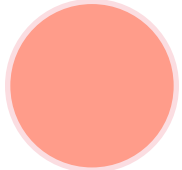
MARIGOLD
15-1150TCX



**LIME
LIGHT**
12-0741TCX



SUNSET
18-1754TCX



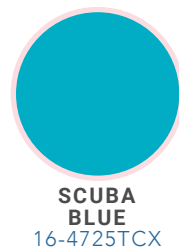
**SUN
PEACH**
15-1621TCX



EMBRACE

EYE-CATCHING BRIGHTS

KEY TRENDS_*Colour 2*



AQUA

**THIS ON-TREND HUE
HAS FOUND ITS WAY TO LINGERIE**



Associated with the sea, the sky and Planet Earth, blue has a special relevance this year.

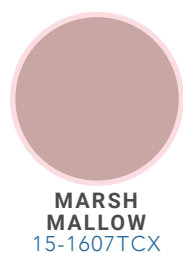
Blue in general is a hot new look for intimates, and aqua is set to be the star of the show, making an impact as a block colour, as well as taking on a feminine charm when teamed with sensual sheers and lace.

REPRESENTING A NEW DIRECTION IN COLOUR, AQUA IS KEY THIS SEASON

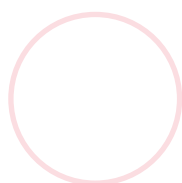
KEY TRENDS_ *Colour 3*

UPLIFTING NEUTRALS

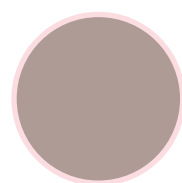
USE LUXE ESSENTIALS TO CREATE A TRANS-SEASONAL LOOK



**MARSH
MALLOW**
15-1607TCX



WHITE
11-4001TCX



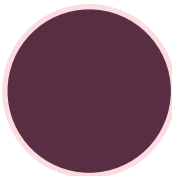
LATTE
#cutting 28
*(16-1703TCX)

Neutrals work well with a wide range of skin tones.

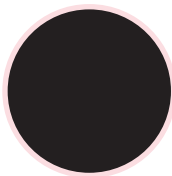
Lightweight, soft-touch fabrics with a sensual sheen make the new neutrals ideal for everyday, breathable styles.

TIMELESS TONES WORK ALL YEAR ROUND

KEY TRENDS_ *Colour 4*



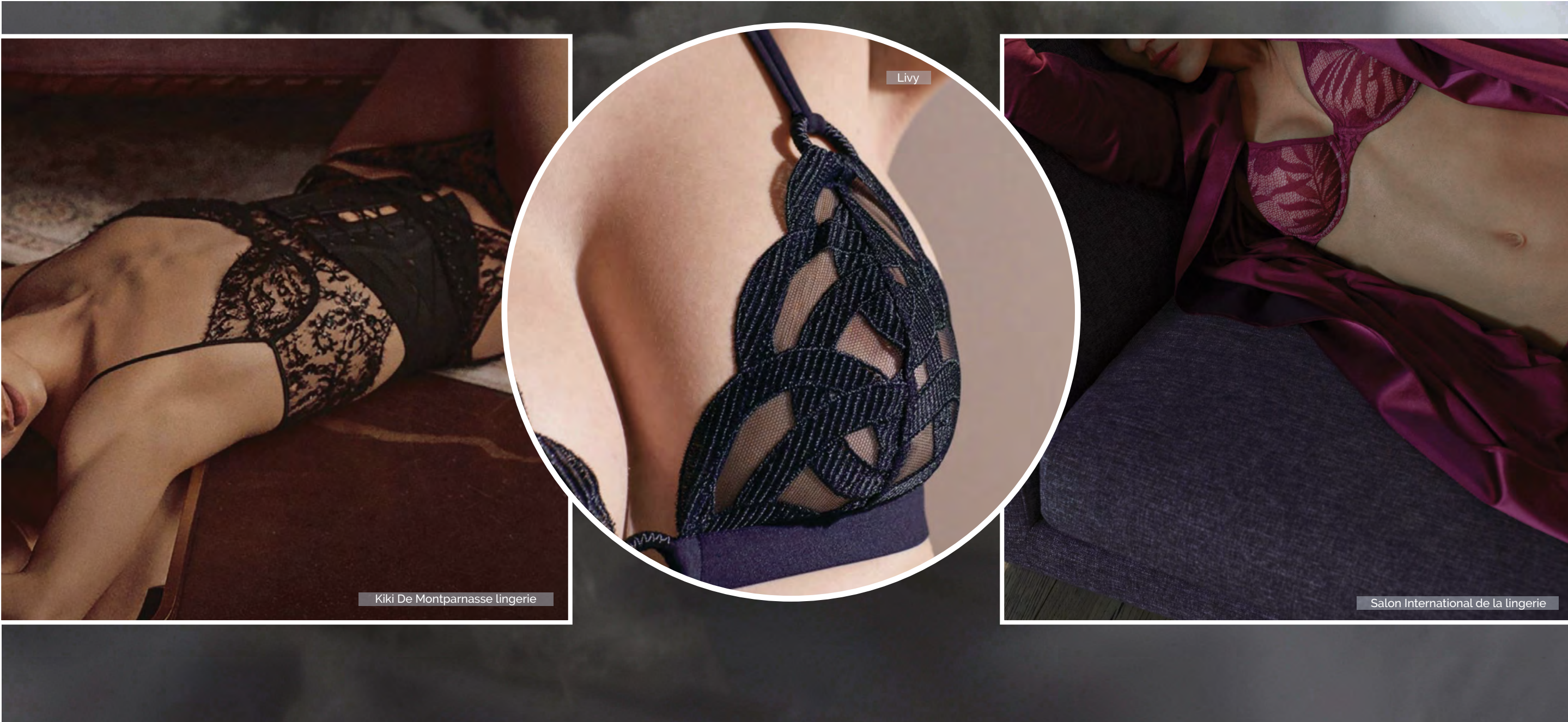
CLARET
#cutting 18
*(19-2315TCX)



BLACK
19-3911TCX

While the brights that have dominated for the last few seasons remain popular,
there are early indications of a shift towards darker tones.

THIS SEASON, GO CHIC AND SULTRY



MOODY HUES RETURN THIS SUMMER